



# Coimisiún na Scrúduithe Stáit State Examinations Commission

LEAVING CERTIFICATE EXAMINATION, 2007

GEOGRAPHY – HIGHER LEVEL

MONDAY, 11 JUNE – AFTERNOON, 1.30 TO 4.20

Examination Number

For the Examiner's Use Only

PART ONE Short Questions	Total Mark
x 8m	
x 6m	
x 4m	
x 2m	
x 0m	
Accumulated Marks	

For the Examiner's Use Only

PART ONE Short Questions	Mark
Accumulated Mark	
Disallowed Marks	
Net mark	

**N.B. Remember to return this paper  
with your answer-book.**

**Otherwise, marks will be lost.**

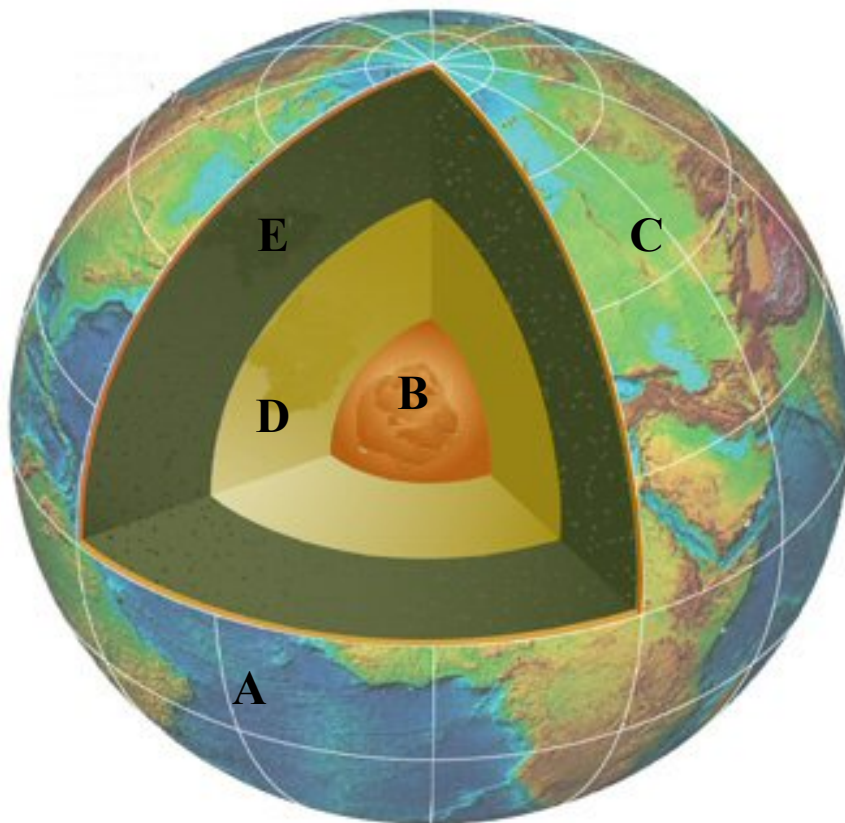
**PART ONE – SHORT-ANSWER QUESTIONS – 80 MARKS**

Attempt **TEN** questions

All Questions carry equal marks

***THESE QUESTIONS TO BE ANSWERED IN THE SPACES PROVIDED***

**1 Structure of the Earth**



Examine the diagram of the structure of the Earth.  
Match each of the following terms with its correct letter in the diagram.

Inner Core	
Mantle	
Oceanic Crust	
Continental Crust	

**[8]**

## 2 Ordnance Survey Map

Examine the 1:50000 OS map of the **Drogheda region** and write in the space provided the correct answer from the options given in **each** of the following statements.

- (i) The coastal landform at O 160 750 is a

<i>Sand dune / Sandy Beach / Sandspit</i>	
---	--

- (ii) The transport feature at O 065767 is a

<i>Motorway Junction / Ring road / Roundabout</i>	
---	--

- (iii) The R166 (found at O 11 77) runs in the direction

<i>East-West / North-South / North East – South West</i>	
--	--

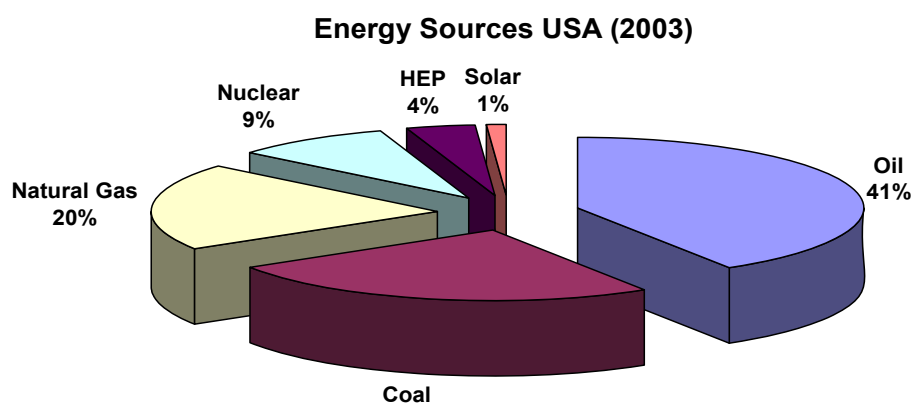
- (iv) The area of the region shown on the map extract is

<i>108 sq km / 54 sq km / 218 sq km</i>	
---	--

[8]

## 3 Energy Consumption

Examine the pie chart below and answer the questions that follow.

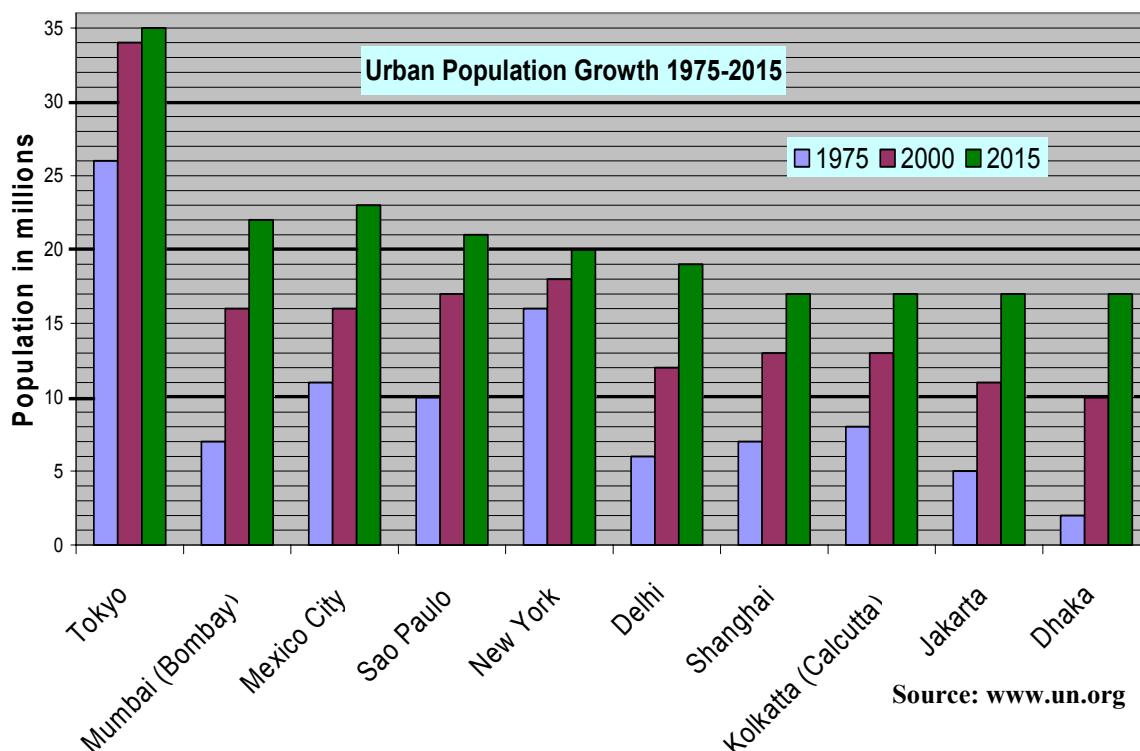


Identify the most important source of energy	
Identify one type of fossil fuel listed in the chart	
What percentage of energy was produced from coal?	
What percentage of energy was produced from renewable sources?	

[8]

#### 4 Urban Population Growth

Examine the chart below and answer the questions that follow.



By how many millions is the population of Mexico City expected to grow between 1975 and 2015?	
Which city is expected to have the lowest increase in population between 2000 and 2015?	
Which city had the fastest rate of increase in population between 1975 and 2000?	
Which city is expected to have the slowest rate of increase in population between 1975 and 2015?	

[8]

#### 5 Concept of a Region

Match each of the region types in Column A with its description in Column B.

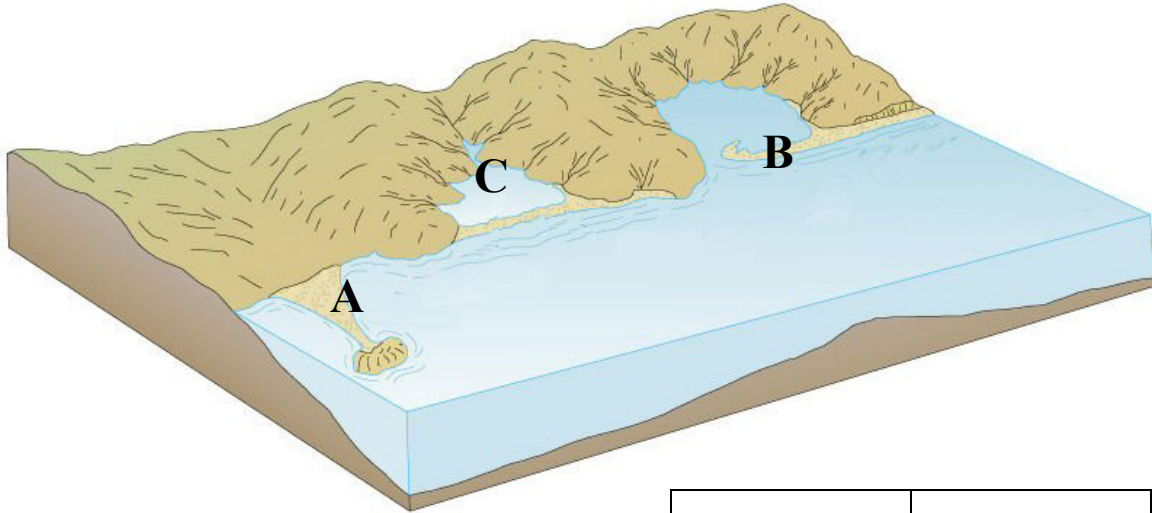
Column A		Column B	
Geomorphological Regions	<b>A</b>	Local Councils / Corporations / constituency boundaries / county divisions etc	
Cultural Regions	<b>B</b>	Less-developed regions / core regions / peripheral regions / regions of industrial decline	
Administrative Regions	<b>C</b>	Regions based on distinctive landforms e.g. karst landscapes, ridge & valley landscapes, plains etc	
Socio-Economic Regions	<b>D</b>	Regions that are associated with language and religion	

[8]

## 6 Coastal Landforms

Examine the diagram below, showing a coastal landscape.

Match each of the following landforms with its correct letter in the diagram

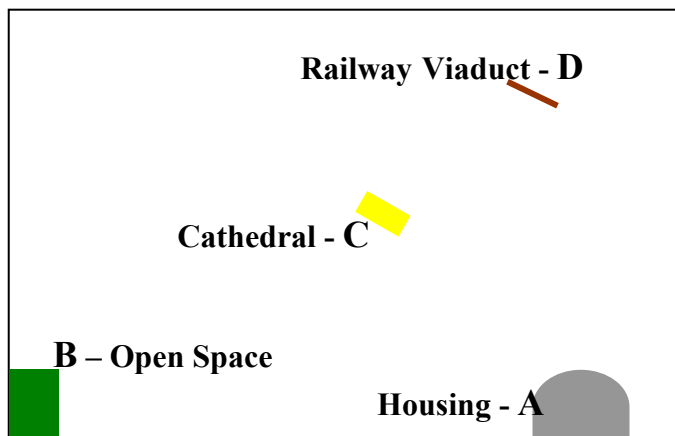


Lagoon	
Sandspit	
Tombolo	
Which of these is the main process active in the formation of the landforms listed above: <i>Erosion</i> / <i>Deposition</i> ?	

[8]

## 7 Aerial Photograph

With the aid of the aerial photograph that accompanies this paper, give the location, using the correct terms, of each of the features shown on the sketch map below.

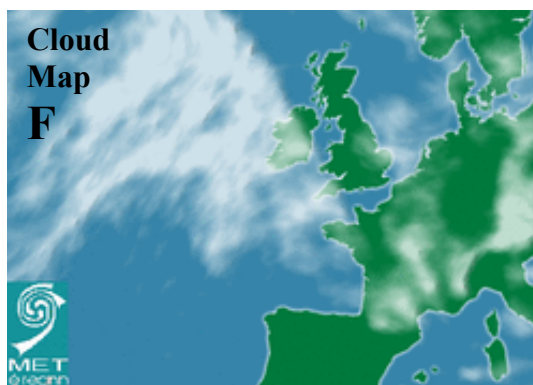
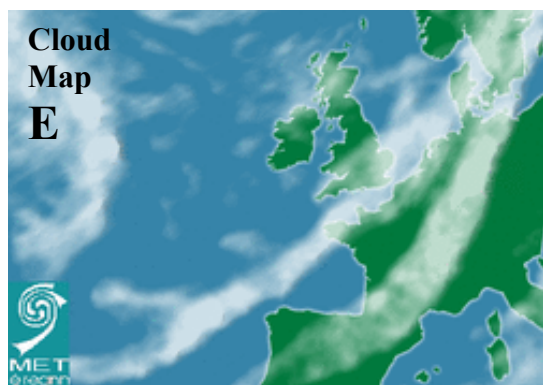
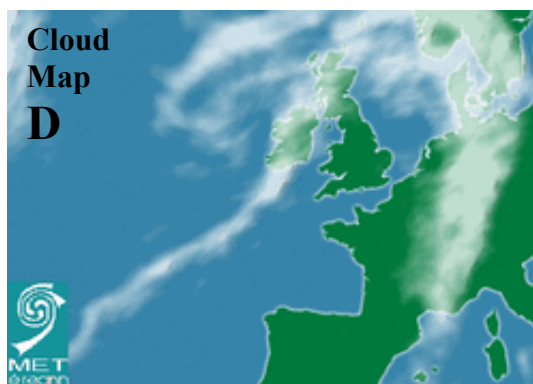
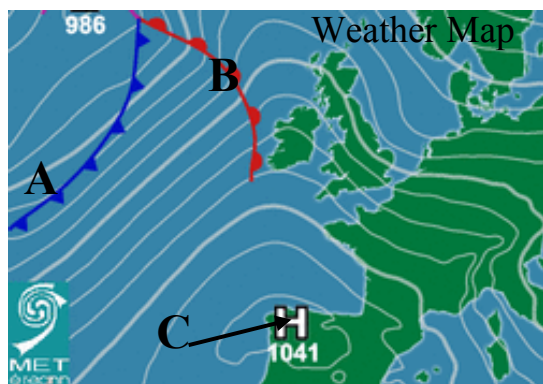


A	
B	
C	
D	

[8]

## 8 Atlantic Weather Chart

Examine the weather map and cloud maps below and answer the questions that follow.



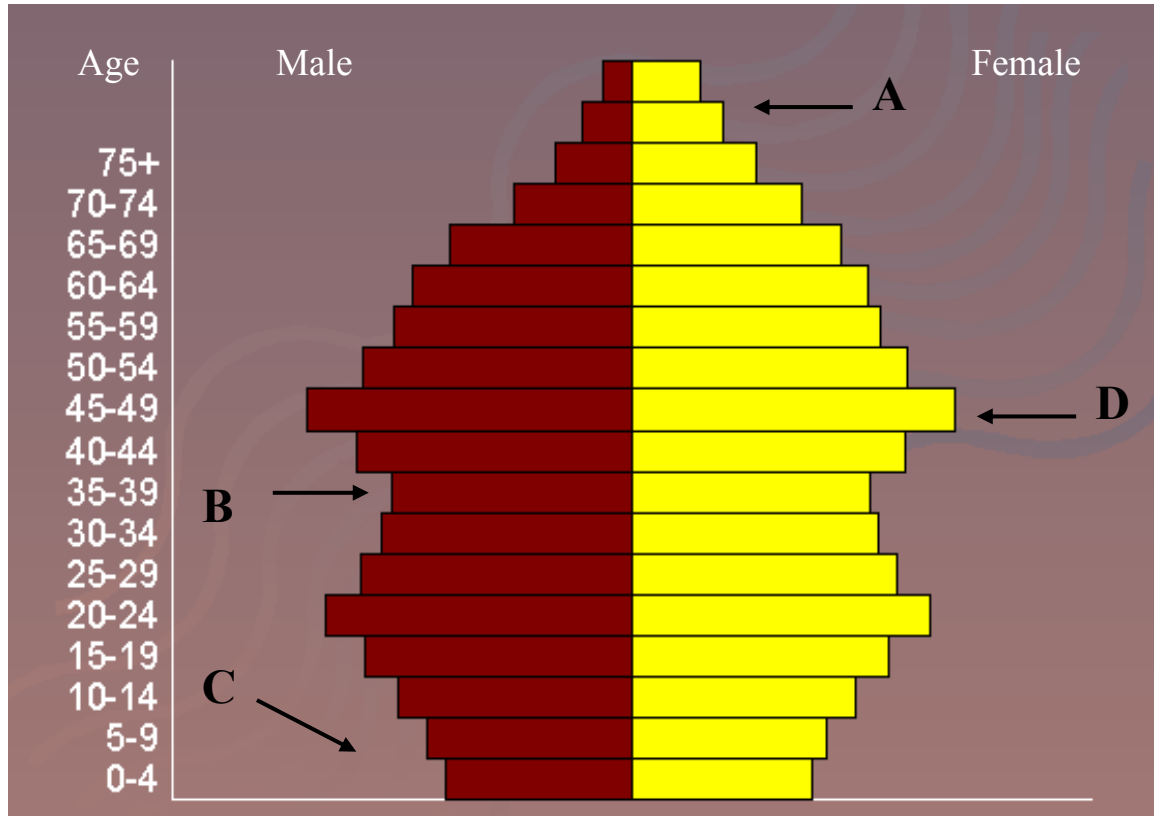
Match each of the following terms with its correct letter – A, B or C - in the weather map.

	Warm Front	
	Anticyclone	
	Cold Front	
Which cloud map - D, E or F – matches the weather map?		

[8]

## 9 Population Pyramids

Examine the population pyramid below and answer the questions that follow.



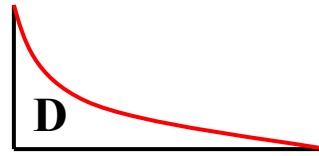
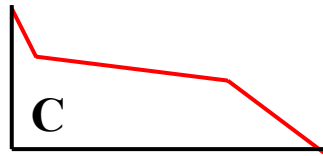
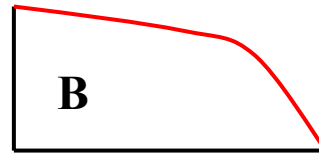
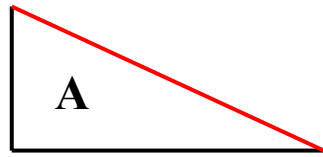
Match each of the following descriptions with its correct letter in the population pyramid.

Higher death rate than normal (through war, famine, disease or emigration)	
Period of immigration or baby boom years	
Women live longer than men	
Smaller number of children being born	

[8]

**10 Slope Types**

Match each of the following slope types with its correct letter in the diagram



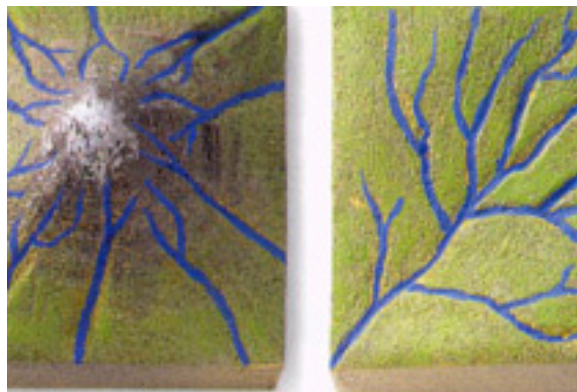
Concave Slope	
Convex Slope	
Stepped Slope	
Even Slope	

[8]

**11 Drainage Systems**

**A**

**B**



Name the drainage pattern shown in Diagram A	
Name the drainage pattern shown in Diagram B	
What is the name given to an area of high ground which separates two river basins?	
What is the name given to the point where a tributary joins a larger river?	

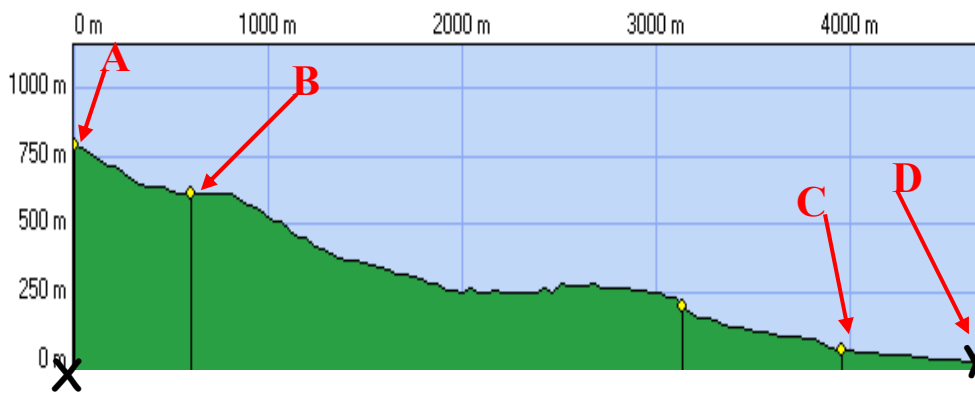
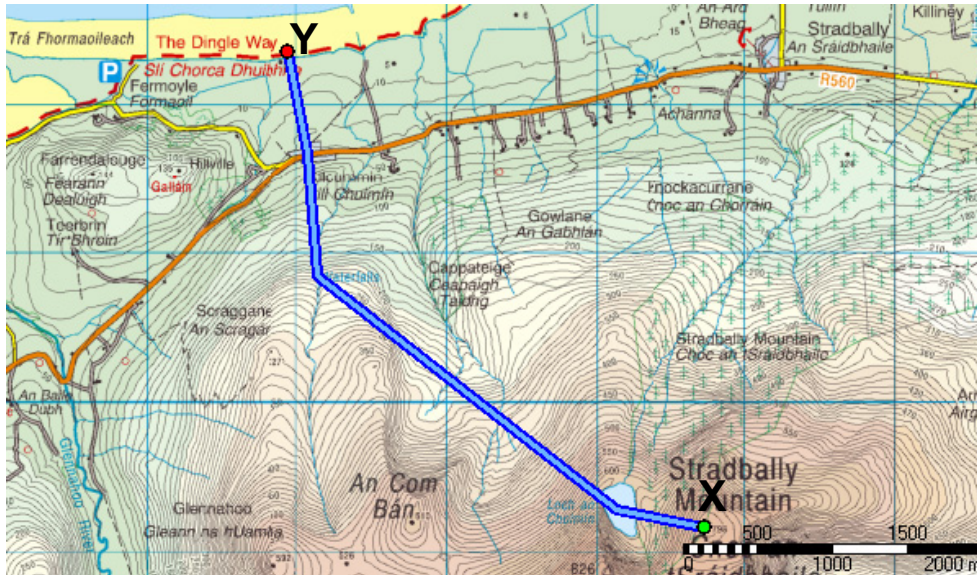
[8]



## 12 Ordnance Survey Maps

Examine the Ordnance Survey map extract below and the profile drawn along the trail that is marked in blue on the map.

Answer the questions that follow.



Actual distance of trail 5200 m  
 Minimum height on trail 0 m  
 Maximum height on trail 798 m

What is the height above sea-level at A, the start of the trail?	
Identify the glacial landform at B.	
Name the road at C	
Identify a tourist attraction at D	

[8]

**PART TWO – STRUCTURED and ESSAY QUESTIONS – 320 MARKS**

You must attempt **FOUR** questions, as follows:

- **Two** questions from **Section 1**
- **One** question from **Section 2**
- **One** question from **Section 3**

***THESE QUESTIONS TO BE ANSWERED IN THE ANSWERBOOK***

**SECTION 1 - CORE**

You **MUST** attempt **TWO** questions:

**ONE** from **Patterns and Processes in the Physical Environment**

**AND**

**ONE** from **Regional Geography**

**PATTERNS AND PROCESSES IN THE PHYSICAL ENVIRONMENT**

**Attempt ONE question**

**Question 1**

**A ORDNANCE SURVEY MAP**

Examine the Ordnance Survey map that accompanies this paper.

Using graph paper, draw a sketch map **half the length and half the breadth** of the map.

On it show and name each of the following:

- The River Nanny
- A beach
- An area of silting / mud
- A numbered spot height

**[20m]**

**B PLATE BOUNDARIES**

“Plate boundaries are zones where crust is both created and destroyed”.

Examine the above statement, with reference to examples you have studied.

**[30m]**

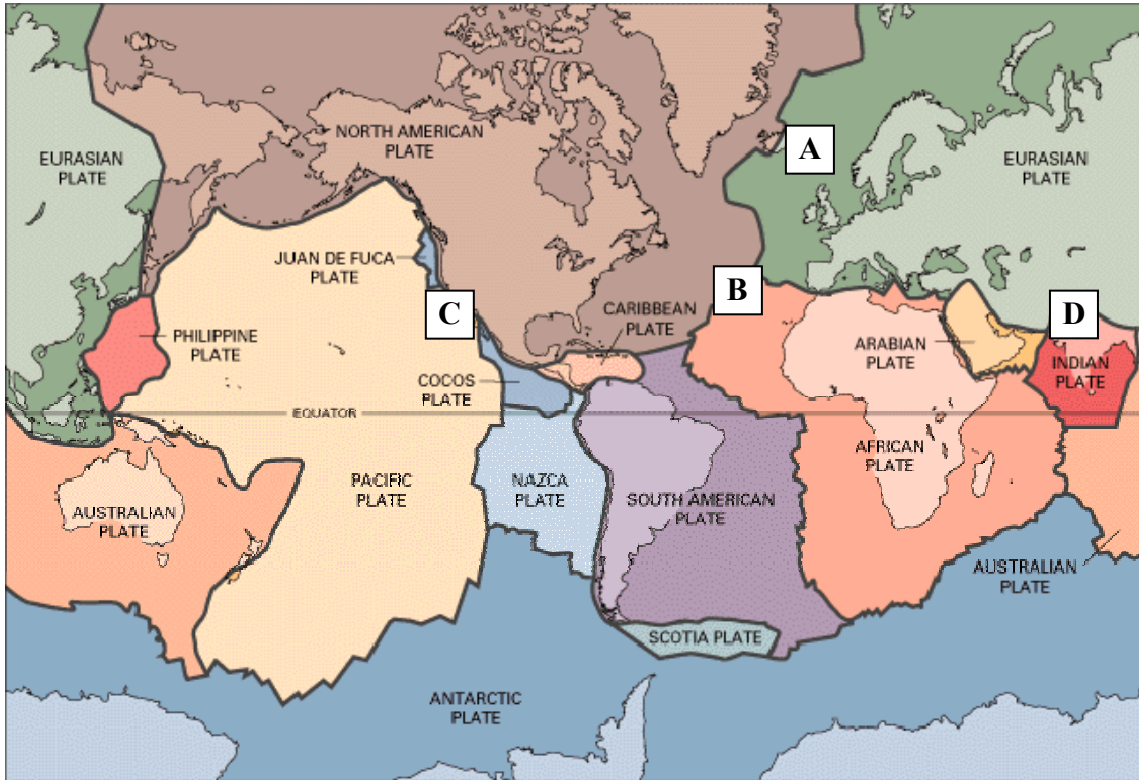
**C WEATHERING**

With reference to the Irish landscape, examine how the processes of weathering have influenced the development of any **one** limestone feature.

**[30m]**

## Question 2

### A PLATE TECTONICS



Answer the following questions in your answer book.

- (i) Name the island at A where volcanoes occur.
- (ii) Name the feature which can be found at B.
- (iii) State clearly the different types of plate boundary found at both C and at D.

[20m]

### B LANDFORM DEVELOPMENT

With the aid of a labelled diagram, examine the processes that have led to the formation of any **one** Irish landform of your choice.

[30m]

### C INTERACTION WITH ROCK CYCLE

Referring to any **one** of the following, examine how humans interact with the rock cycle:

- Mining,
- Quarrying
- Oil/gas exploration
- Geothermal energy production.

[30m]

### Question 3

#### A SATELLITE IMAGES

The satellite images below all show different views of a volcano.



Name an example of a volcano which you have studied.

State **two** advantages and **one** disadvantage for people living in a volcanic region.

[20m]

#### B STRUCTURES OF DEFORMATION

Examine the impact of **folding and faulting** on the landscape.

In your answer refer to **one** landform in **each** case.

[30m]

#### C HUMAN INTERACTION

Discuss how **one** of the following could impact on the landscape:

- Deforestation
- Coastal management
- Flood control

[30m]

**REGIONAL GEOGRAPHY**

**Attempt ONE question**

**Question 4**

**A IRISH REGIONS**

Draw an outline map of Ireland.  
Show and name the following on it:

- (i) Any **one** Irish region that you have studied
- (ii) **One** urban centre in the region
- (iii) **One** relief feature in the region
- (iv) **One** drainage feature in the region.

**[20m]**

**B ECONOMIC PROCESSES**

Examine the development of any **one** of the following economic processes in a **European region – not Ireland** - of your choice:

- Industry
- Tourism

**[30m]**

**C PRIMARY ACTIVITIES**

Examine the development of primary activities in a **continental/sub-continental region** of your choice.

**[30m]**

### Question 5

#### A CONCEPT OF A REGION

A region is an area that has one or more characteristics that distinguish it from other areas. Describe the key characteristics of a **climatic** region or a **geomorphological** region of your choice.

[20m]

#### B SECONDARY ACTIVITIES

Examine the development of secondary economic activities in an **Irish region** that you have studied.

[30m]

#### C CULTURAL DIFFERENCES

Account for the development of cultural differences in a **continental / sub-continental region** that you have studied.

[30m]

### Question 6

#### A NON-IRISH REGIONS

Draw an outline map of a **European region – not Ireland - OR a continental / sub-continental region**.

Show and name the following on it:

- (i) Any **two** physical features in the region
- (ii) Any **two** urban centres in the region.

[20m]

#### B URBAN GROWTH

Examine the growth of an urban area in a **European region – not Ireland -** of your choice.

[30m]

#### C PRIMARY ACTIVITIES

Examine **two** factors that have influenced the development of primary activities in any **Irish region** you have studied.

[30m]



**SECTION 2 - ELECTIVES**

You **MUST** attempt **ONE** question

From **EITHER**

- **Patterns and Processes in Economic Activities**
- OR**
- **Patterns and Processes in the Human Environment**

**PATTERNS AND PROCESSES IN ECONOMIC ACTIVITIES**

**Attempt ONE question**

**Question 7**

**A GROSS DOMESTIC PRODUCT**

Examine the table below showing the GDP of selected countries in the European Union (EU).

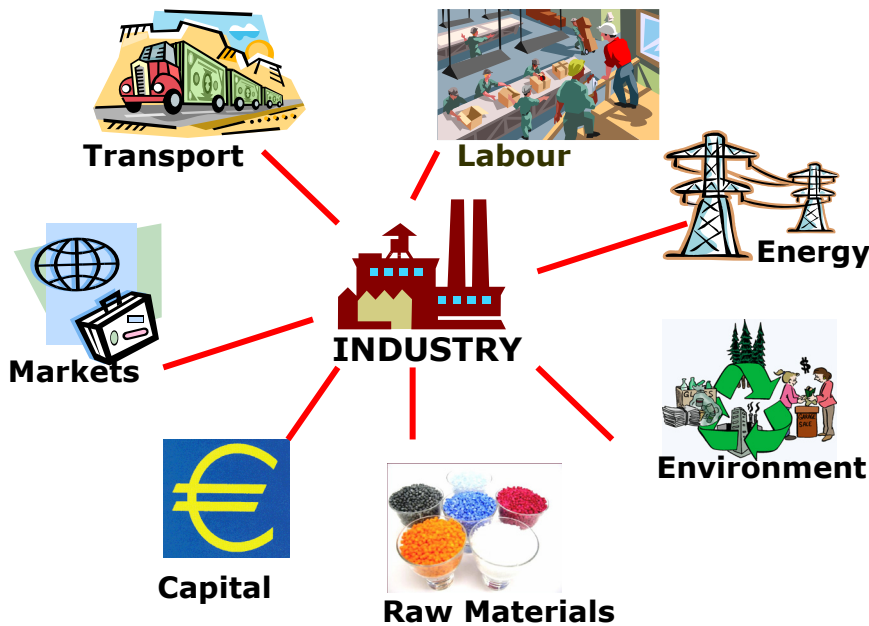
Denmark	€27,000
Hungary	€14,000
Ireland	€31,000
Poland	€11,000
Spain	€21,000
United Kingdom	€26,000

Source: www.forfas.ie

Using graph paper, draw a graph suitable to illustrate this data.

**[20m]**

**B SECONDARY ECONOMIC ACTIVITY**



Examine the influence of any **two** of the factors listed above on the location of **one** secondary economic activity that you have studied.

**[30m]**

**C LOCAL & GLOBAL INTERESTS**

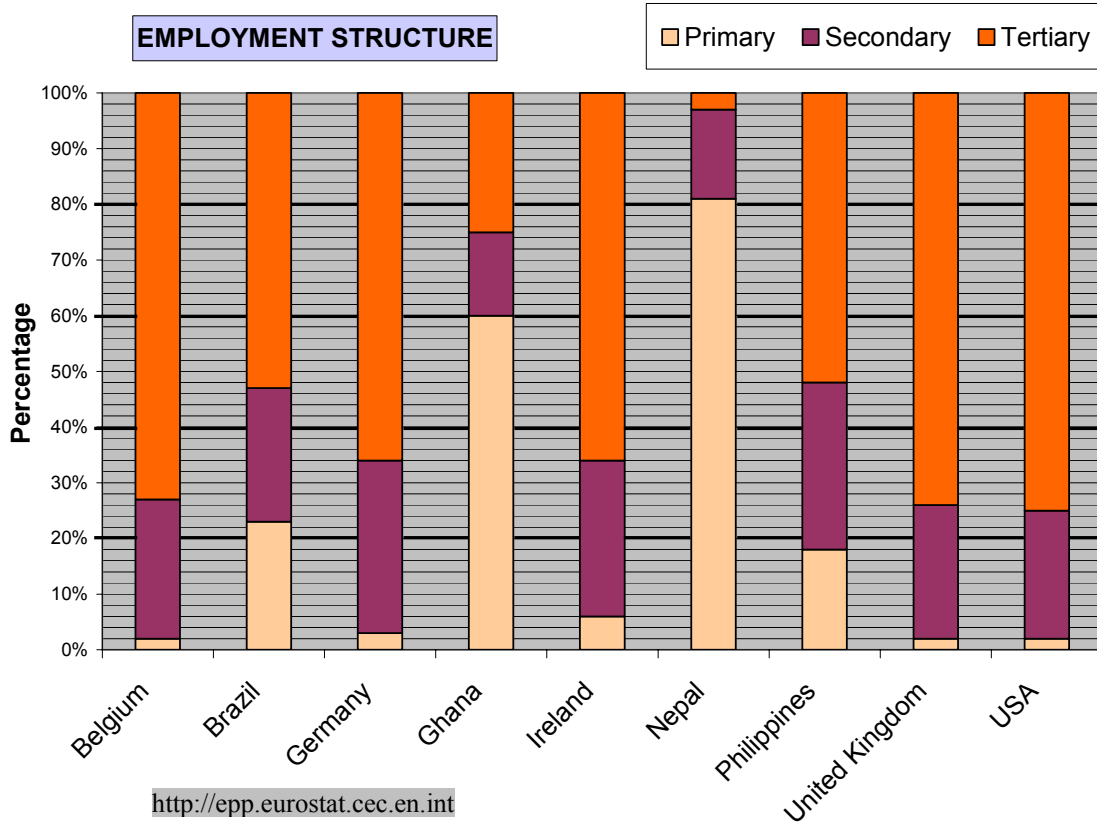
Examine, with reference to examples you have studied, how conflict often occurs between the need to exploit natural resources and the need to protect the environment.

**[30m]**

## Question 8

### A EMPLOYMENT STRUCTURE

Examine the table below, showing the employment structure in selected countries in 2003



Answer the following questions in your answer book.

- What percentage of the workforce was employed in the primary sector in Ireland?
- What percentage of the workforce was employed in the secondary sector in the Philippines?
- Which country would appear to have the least developed economy?
- With reference to the data, give one reason why you chose the country named in (iii).

[20m]

### B ORDNANCE SURVEY MAP

Study the 1:50000 Ordnance Survey map that accompanies this paper.

“Drogheda is an important centre of economic activity.”

Examine the above statement, using map evidence to support your answer.

[30m]

### C GLOBALISATION & MNCs

In the case of **one** multi-national company (MNC) that you have studied, examine the global nature of its activities.

[30m]

### Question 9

#### A AERIAL PHOTOGRAPH

Examine the aerial photograph that accompanies this paper. Draw a sketch-map **half the length and half the breadth** of the photograph. On it show and name **one** example of each of the following land-uses:

- Recreation
- Religion
- Industry
- Storage

[20m]

#### B SERVICE INDUSTRIES

Examine the development of transport/communications **or** financial services in developed economies, referring to examples you have studied.

[30m]

#### C EUROPEAN UNION POLICIES

Examine the impacts of any **two** European Union policies on the Irish economy

[30m]

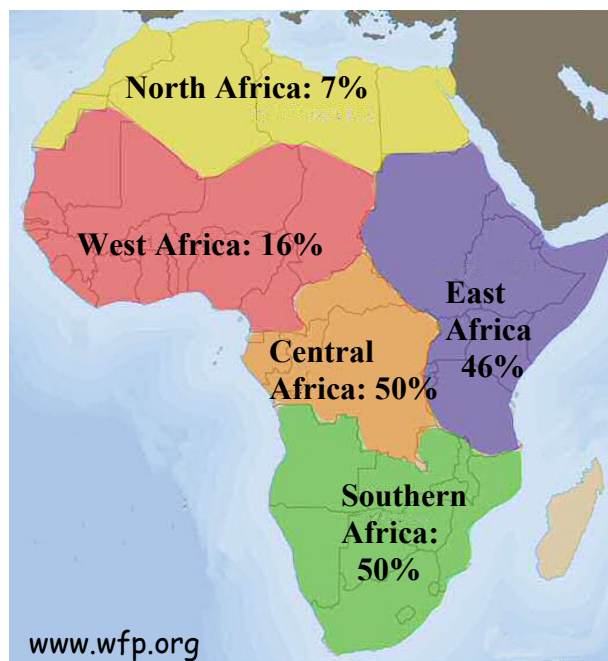
## PATTERNS AND PROCESSES IN THE HUMAN ENVIRONMENT

Attempt ONE question

### Question 10

#### A WORLD HUNGER

Examine the map below, showing the percentage of the population of Africa by sub-region who are undernourished.



Using graph paper, draw a graph suitable to illustrate the data.

[20m]

#### B URBAN FUNCTIONS

Examine the aerial photograph of Drogheda that accompanies this paper. Examine any **three** functions of the town, using evidence from the photograph to support your answer.

[30m]

#### C OVERPOPULATION

Overpopulation could be defined as the condition whereby the number of people in an area is too great to be supported by the available natural resources.

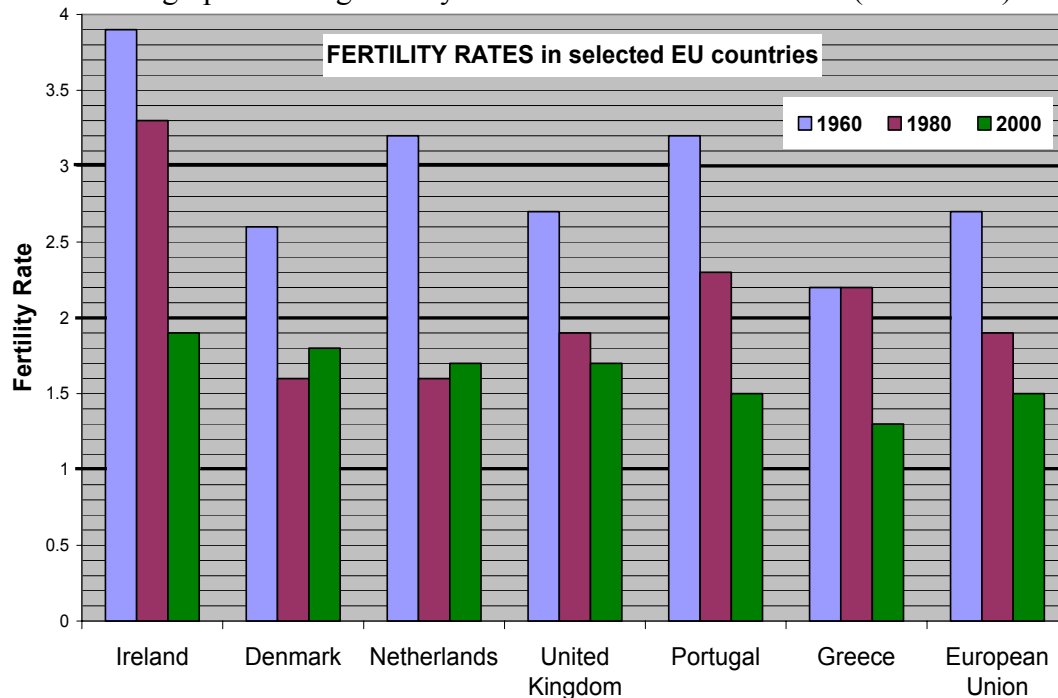
Examine **one** cause **and one** effect of overpopulation, referring to examples you have studied.

[30m]

## Question 11

### A FERTILITY RATES

Examine the graph showing fertility rates in selected EU countries (1960-2000).



Answer the following questions in your answer book.

- Which country had the lowest fertility rate in 2000?
- By how much did Ireland's fertility rate decline between 1960 and 2000?
- Name the two countries that had an increased fertility rate between 1980 and 2000.
- Calculate the average fertility rate in the European Union in the period from 1960 to 2000.

[20m]

### B HISTORIC SETTLEMENT

The area shown on the Ordnance Survey map that accompanies this paper, shows evidence of a wide range of **historic settlement**.

Examine this statement using map evidence, with reference to any **three** different aspects of historic settlement.

[30m]

### C URBAN CENTRES

Cities are places of opportunity but also have problems.

Examine this statement, with reference to a city or cities of your choice.

[30m]

**Question 12**

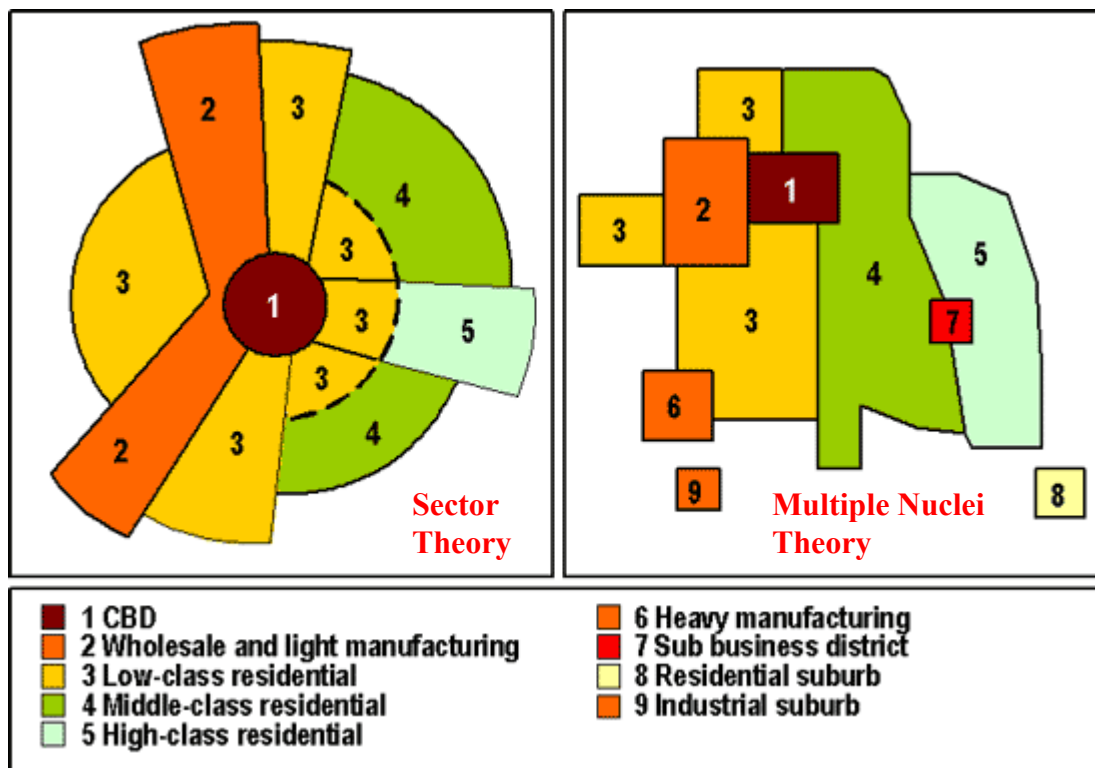
**A AERIAL PHOTOGRAPH**

Examine the aerial photograph that accompanies this paper. Draw a sketch-map **half the length and half the breadth** of the photograph. On it show and name the following land-uses:

- Church
- Footbridge
- Residential area
- Recreational area

[20m]

**B URBAN LAND USE**



Examine the relevance of **one** of the above land use models as it applies to land use zones in a city that you have studied.

[30m]

**C POPULATION MOVEMENT**

Migration, both internal and international, continues to play an important role in shaping the populations of states and regions.

Examine **one** impact of population movement on the donor regions and **one** impact on the receiver regions.

[30m]

### **SECTION 3 - OPTIONS**

**Attempt ONE question**

N.B. It is better to treat of three or four aspects of the theme in some detail, rather than to give a superficial treatment of a large number of points.



## Global Interdependence

13. “Global warming and desertification are environmental issues which need to be tackled immediately”.  
Discuss the above statement, referring to examples you have studied. [80m]
14. Examine the part that national debt and global trade patterns play in the continuing cycle of poverty in many countries. [80m]
15. Examine the idea that attitudes towards development and underdevelopment are subject to change. [80m]

## Geocology

16. Examine how over-cropping / over-grazing and desertification can affect soils. [80m]
17. Examine the general composition and characteristics of any **one** soil type that you have studied. [80m]
18. Describe how plant and animal life adapt to soil and climatic conditions in a biome which you have studied. [80m]

## Culture and Identity

19. The influence of religion on politics varies over time and from region to region. Discuss the above statement, with reference to examples you have studied. [80m]
20. Many states have different cultural/ethnic groups within their borders. Examine how these groups relate to one another, with reference to examples you have studied. [80m]
21. Examine how migration can affect racial patterns. [80m]

## The Atmosphere-Ocean Environment

22. Describe and explain the development of patterns of air circulation. In your answer you should refer to **at least two** of the following: [80m]
- Global wind systems
  - Land and sea breezes
  - Mountain and valley winds
23. Examine the exchange of water between the oceans and the atmosphere. [80m]
24. Give an explanatory account of any **one** distinctive global climate that you have studied. [80m]

Blank Page

Blank Page